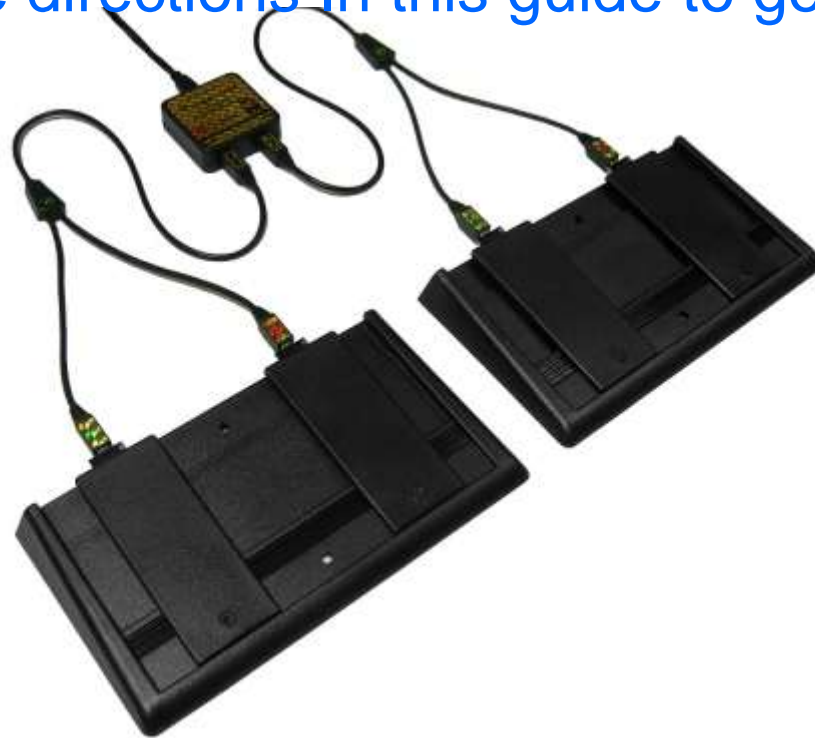




# Fragpedal Quad Setup Guide

Congratulations on your purchase of a Fragpedal Quad!  
Follow the directions In this guide to get it set up.





# Fragpedal Quad Setup Guide

## Table of Contents

Opening the Box	
Product Packing.....	1
Parts Listing	2
Assembly.....	3
Customizing your feel	
Choosing your Stance.....	7
(optional)Raising and Lowering Pedals	8
(optional)Changing pedal spacing.....	9
Using the Software	
Introduction to Configurator.....	10
Managing Profiles	11
Macros & Smart Buttons.....	12
Device Memory Saves	13
Downloading new content.....	14



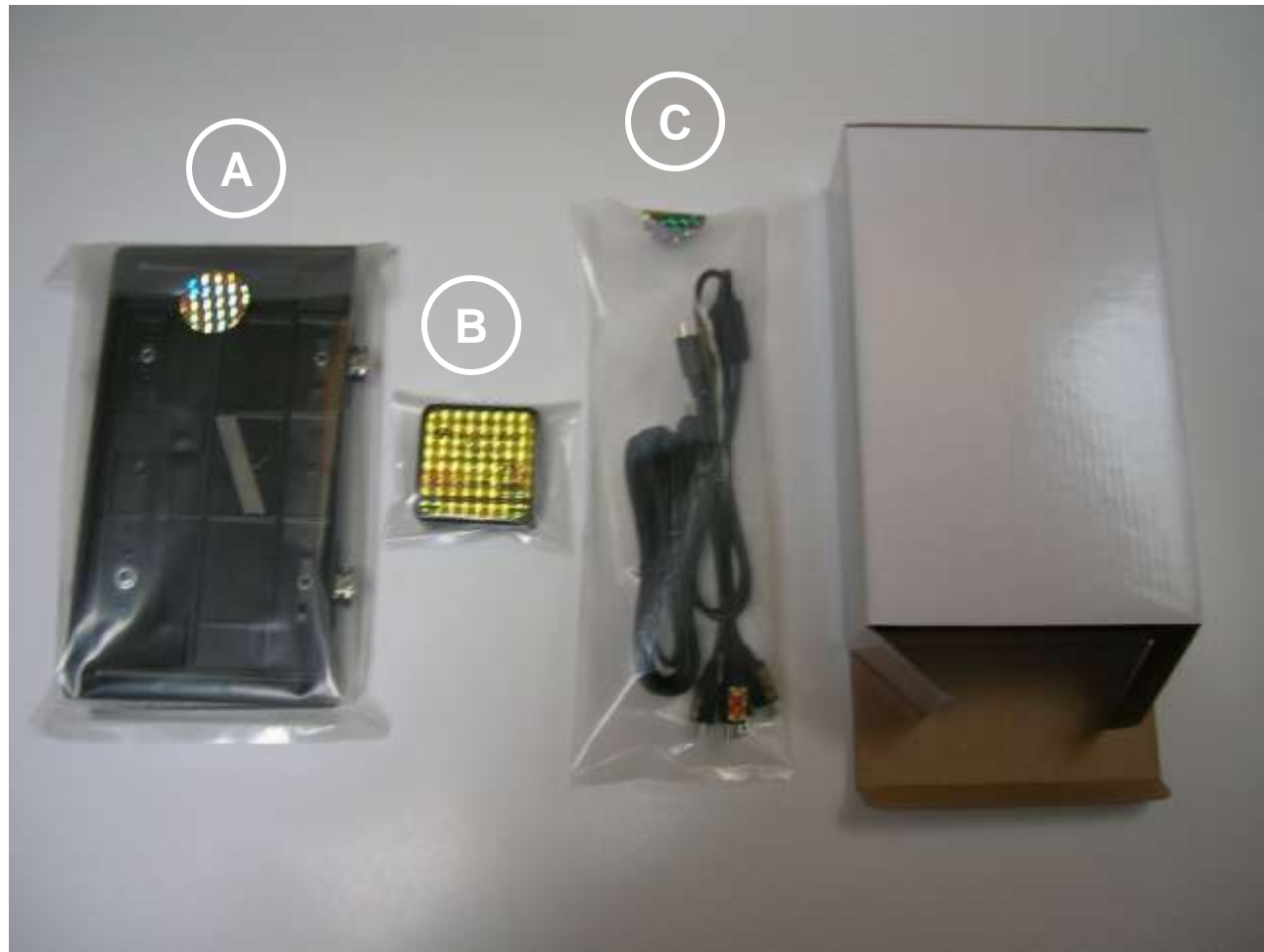
# Fragpedal Quad Setup Guide

## Product packing

1

The Fragpedal Quad comes packed in 3 plastic sleeves:

- **A** – the pedal pads (2)
- **B** – the control box
- **C** – the cords





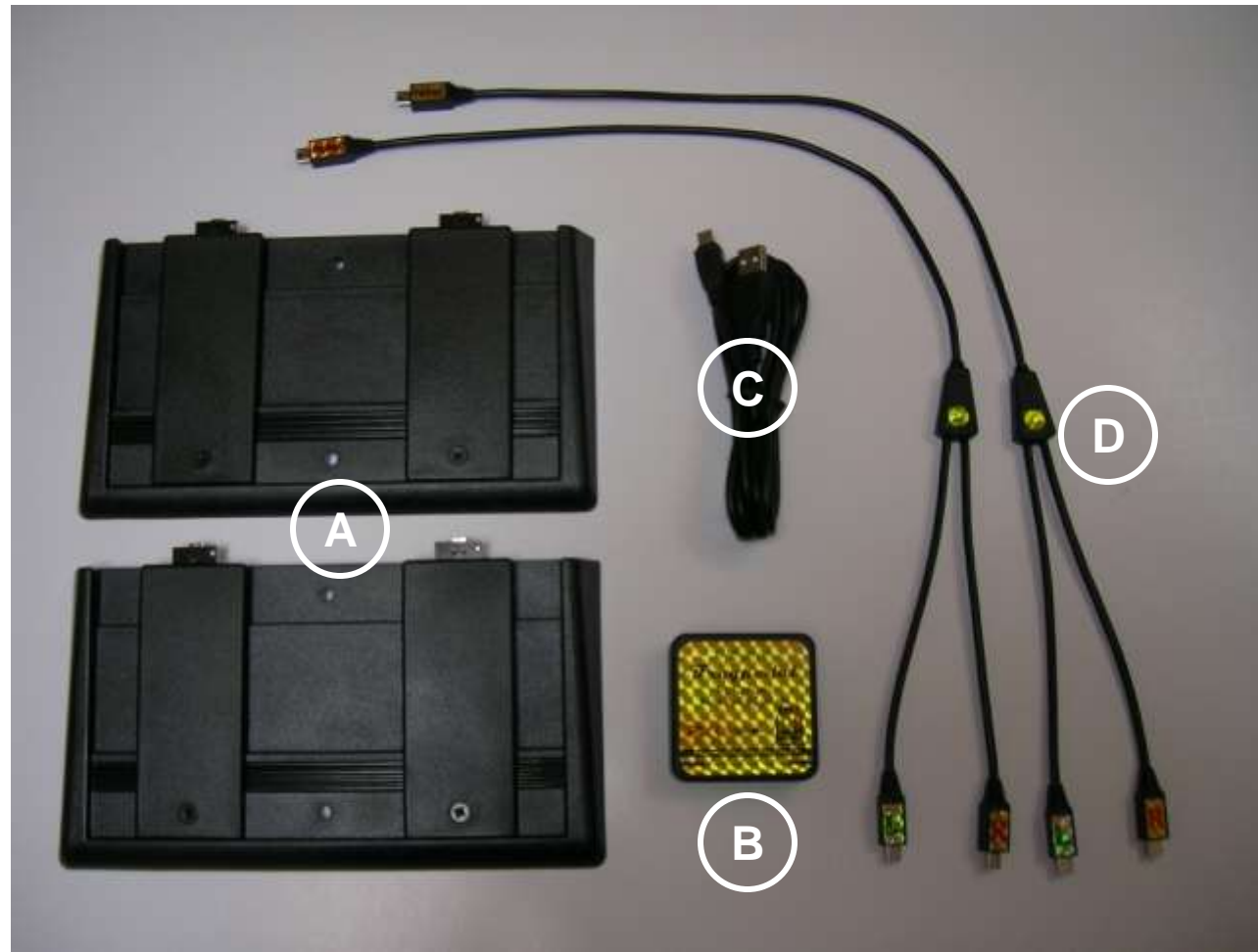
# Fragpedal Quad Setup Guide

## Fragpedal Quad parts

2

Remove the parts from the plastic sleeves.  
You will have:

- **A** – 2 pedal pads (assembled)
- **B** – 1 control box
- **C** – 1 6' USB to USB mini cord
- **D** – 2 pedal cords





# Fragpedal Quad Setup Guide

## Assemble the control box and plug to PC

3

**Note: Before plugging the control box to your PC:**

If you have already installed the Configurator software (IDIconfig.exe) be sure the application is not running. Check the taskbar for the IDI icon and right click it and exit.

If the Configurator *is* running when the device is plugged, you may see a window pop up with a message about upgrading the firmware. **DO NOT** update the firmware, click “No”.

**( For the first 30 seconds or so, Windows will be configuring the device, and memory upgrades during this time will fail.)**

- A – Plug the USB-mini end of the USB cord into the top of the control box and plug the other end to a USB receptacle on your PC.

Note: Windows will now “register” the device. You will see several USB messages just above the taskbar as this process takes place. Because the device initializes as several different peripherals, it takes up to 30 seconds or so to complete the registration.





# Fragpedal Quad Setup Guide

Plug the pedal cords to the control box

4

- A – There are 2 pedal cords and 2 plugs at the bottom of the control box. Plug the ends marked “Pedal” into the control box.





# Fragpedal Quad Setup Guide

## Plug in the pedals

5

- A – Each pedal cord has a pair of plugs marked with a “L” or “R” for left or right. Plug the cords to the appropriate right and left button assemblies on the pads.  
(The right/left orientation should be as viewed from the front of the pads)





# Fragpedal Quad Setup Guide

## Pad placement

6

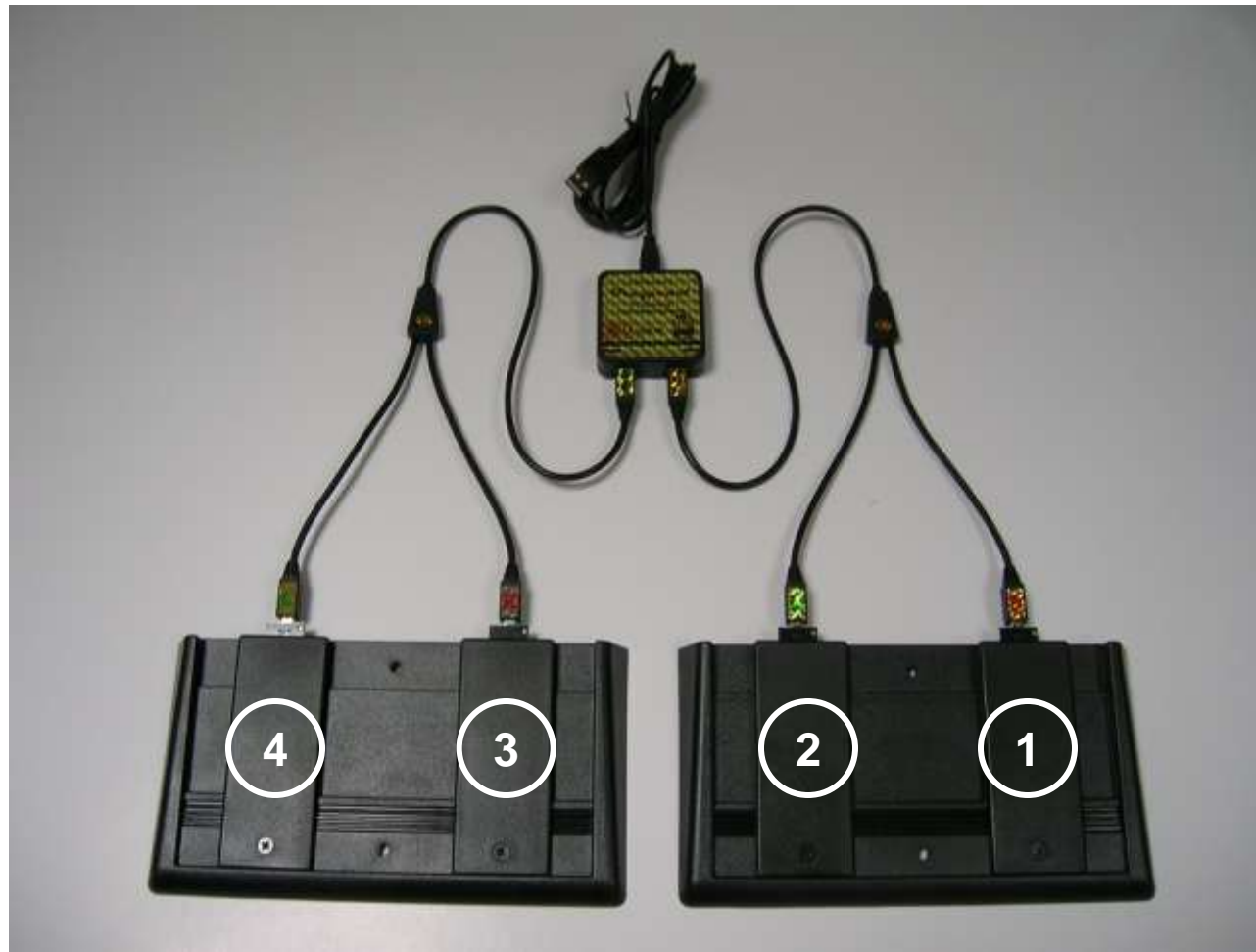
### Keeping the pads in place

If you have carpet, the pads webbed back will hold them firmly in place.

If you have hard flooring like wood or tile, the rubber backing of the pads will hold them securely.

*However*, if you have an “athletic playing style” and/or very slick floors, you can also use repositionable putty {“poster putty”} installed under the hollow ends to securely hold them in position on the floor.

- A – Place the pedal pad that is connected to the right plug cord on the floor to the right, and the other pad to the left.
- B – The buttons are numbered from right to left because most people are right footed.
- C – Spacing of the pads is up to you. A good spacing to start with is to separate the pads by your shoulder width.





# Fragpedal Quad Setup Guide

## Choosing your Pedal Stance

7

**Duh! I put my toes on the pedals and press down. I got this.**

Many of our customers prefer to press the pedal buttons with their heel, instead of their toes. Should I use my heels?

Pros: Some users feel this is better for long sessions of use, since you can keep your toe resting on the ground, and simply lift and drop your heel to press buttons. Some users even feel that it is easier to pivot from one button to another.

Cons: It takes some getting used to. For some users, it may feel slower.





# Fragpedal Quad Setup Guide

## (Optional) Install pedal adjust pins for setting pedal height

8

### Decisions, Decisions: Raised Pedals for Increased Resistance, or Lowered for Minimum Actuation Distance?

The Fragpedal is the only foot pedal with adjustable pedal resistance, and the debate over optimum pedal height is carried out daily at the GWS office.

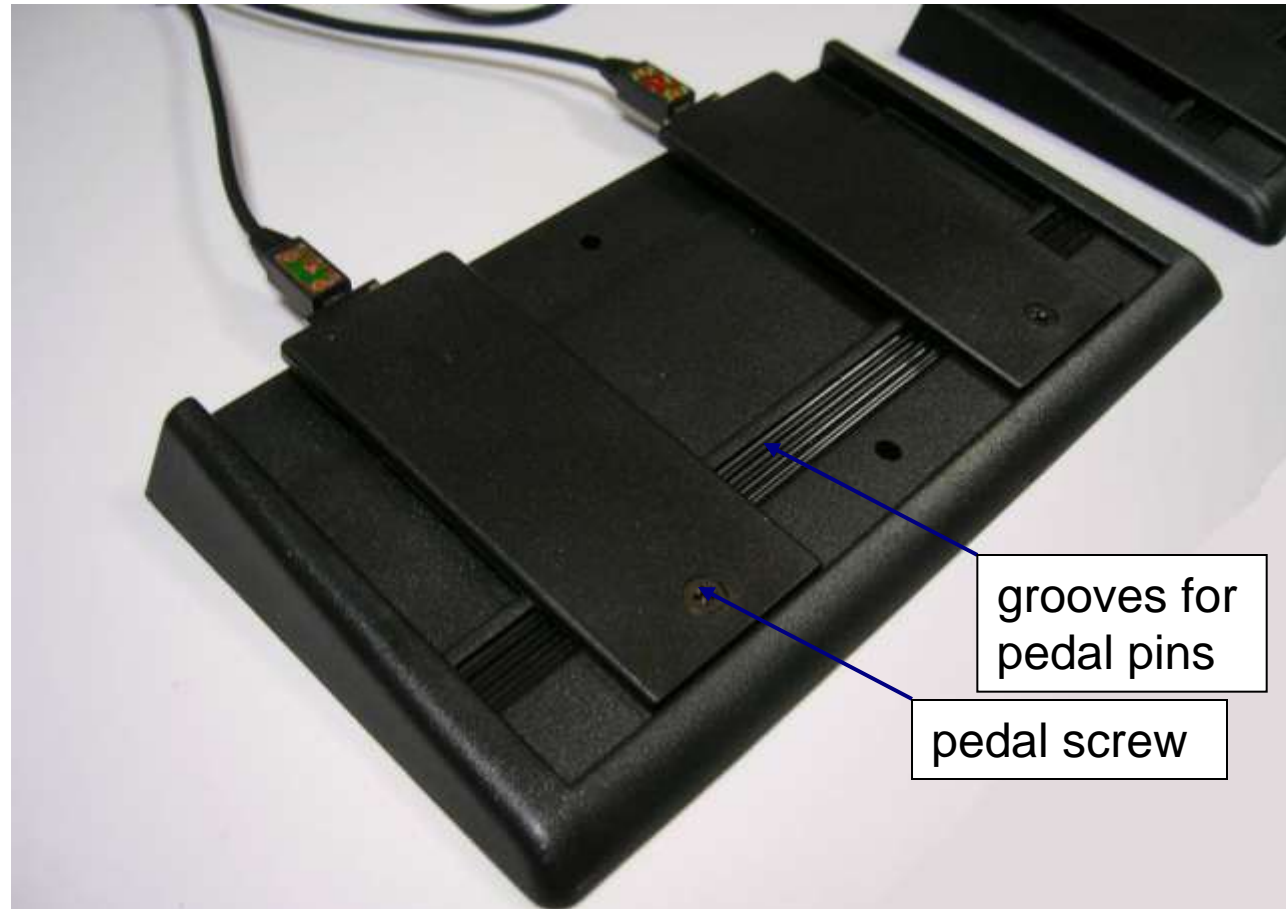
**Raised Pedals:** The pedal sits higher off the button, so you have to press the pedal harder. This lets you rest your feet on the pedals without activating the buttons. It also provides tactile feedback, like a brake pedal, so the harder you press, the harder the pedal presses back.

**Lowered Pedals:** The buttons require less force to push. Choose what suits you best!

A – Taped to the bottom of one of the pads are 4 steel pins which may optionally be used to adjust the height angle (and pressure) of each pedal.

B – Loosen the pedal screw (you should use a wrench or pliers to hold the nut on the underside) and slide a pin into 1 of the 4 grooves, with the pin centered under the pedal. Retighten the pedal screw.

C – The 4 grooves each add an additional 1/8" to the pedal height. The first slot (from the back of the pad) raises the pedal end by 1/8" and the fourth (front slot) raises the pedal end to 1/2".





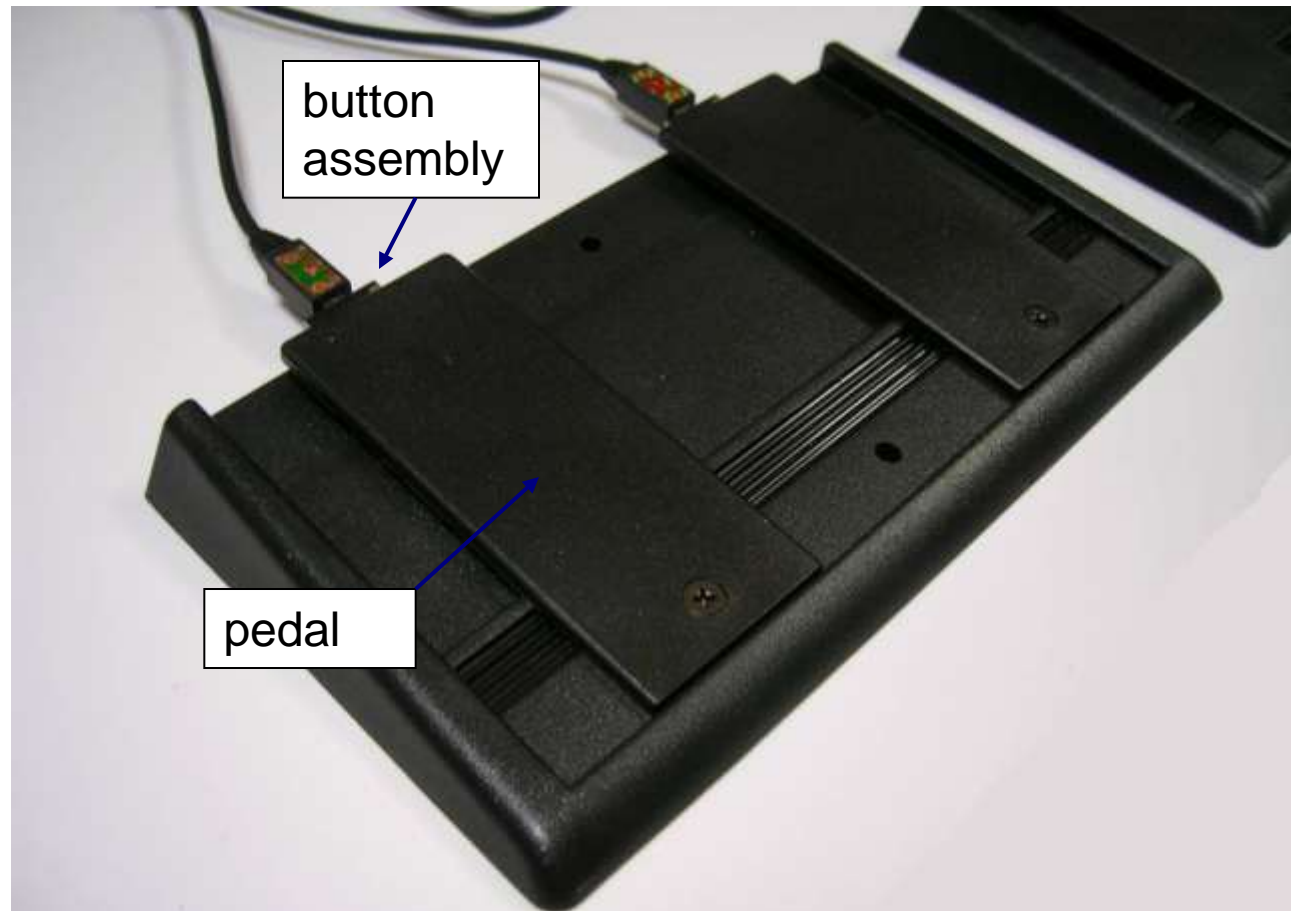
# Fragpedal Quad Setup Guide

## (Optional) Pedal spacing adjustment

A – Viewing the back of a pedal pad, you will see there are alternate sets of holes for the pedal and button mounting screws. You can move the pedals farther apart or closer together, and even put a pedal in the middle. Pedals and their button assembly are centered together on the pad and move as a set, each is fastened with a single screw.

B – Remove the screw holding the pedal and the screw holding the button, move the button and pedal to the position desired and re-install the screws.

\*\*\* You will need a Phillips head screwdriver (no 1) and a small crescent wrench, nut driver, or pliers to tighten/hold the nut on the underside.





# Fragpedal Quad Setup Guide

Open the Configurator and program the buttons

10

A – Click on the labels for each button and assign commands from the drop down menus.

- Besides binding commands to buttons, you can also assign “smart button macros” which allow the button to operate with special functionality (like being able to tell a quick tap from a long press).
- Smart button technology gives buttons and keys alternate command outputs that enhance strategy in games.
- Use the Macro Builder module of the Configurator to easily build smart button macros for assignment to both the standard and virtual buttons.





# Fragpedal Quad Setup Guide

## Creating, Deleting and Managing Profiles

11

### What are profiles, any way?

The Fragpedal supports up to 30 profiles, each with different button settings and properties. You can create one profile per game, or make use multiple profiles for different uses in the same game. If you use the Fragpedal for different games, you might want to use an alias (control file) made just for that game. Check our game support library at [www.GoodWorkMatters.com](http://www.GoodWorkMatters.com) to see if we support your game, or request it!

### Editing Profile Properties

Right-click the profile name OR select Configuration -> Properties

A – Creating and Deleting Profiles

Simply Select 'New' or 'Delete'

B – Renaming Profiles

Simply select 'Rename'

C – Changing Background Image

Select in 'Properties'

D – Changing your Macro file

Select in 'Properties'

E – Changing your Alias

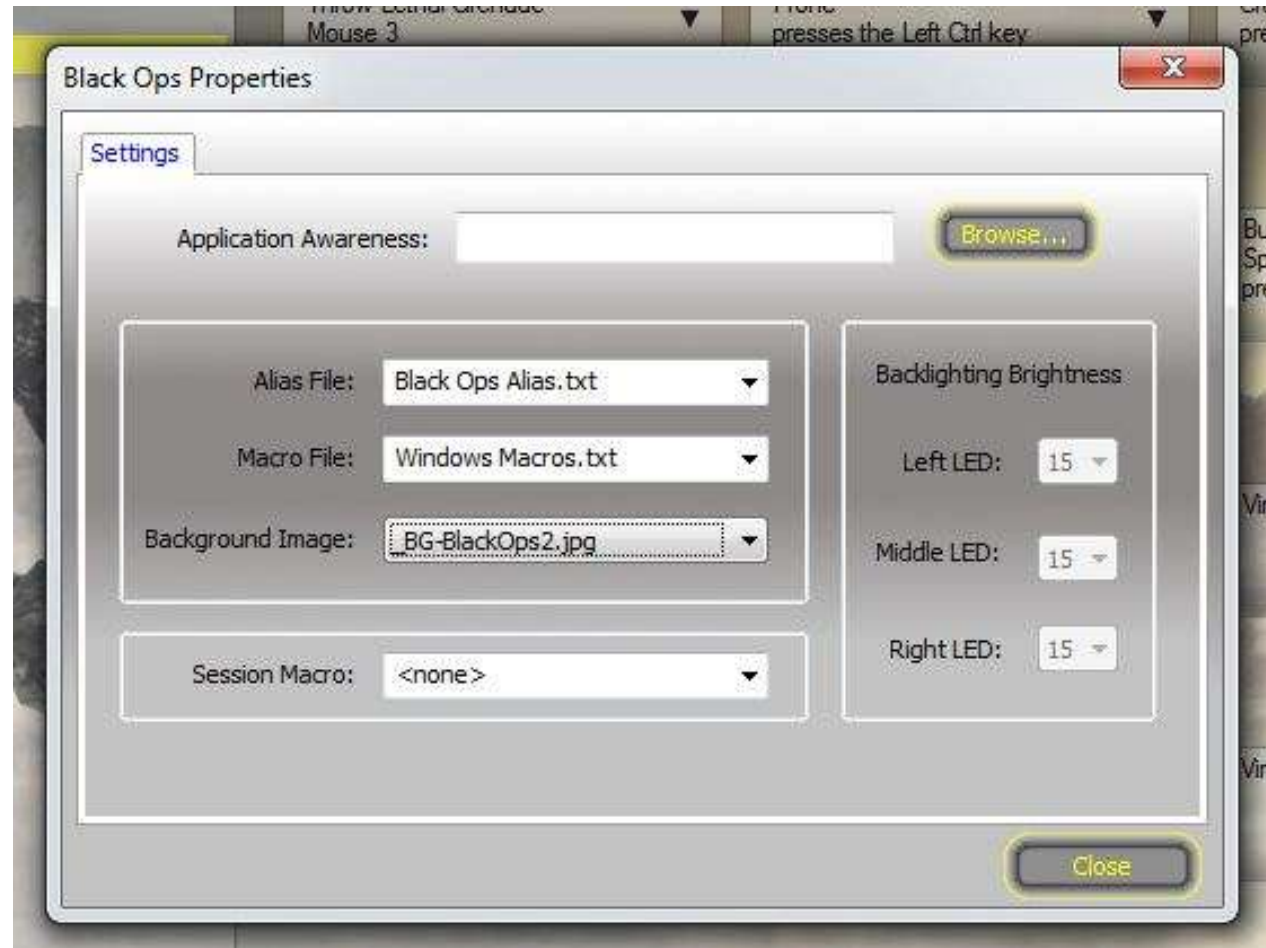
(application-specific controls) file

Select in 'Properties'

F - Setting Application Awareness

Select in 'Properties'

- With Application Awareness enabled, running a game or application automatically activates the corresponding profile settings.





# Fragpedal Quad Setup Guide

## Programming IDI Smart Buttons and macros

10

### What's so good about these Smart Buttons?

Smart Buttons throw away traditional button behavior for something a little more, well, contemporary. Whereas simple macros just execute a string of commands on a button press, Smart Buttons behave differently. You can create them with the Macro Builder

### Assigning Macros & Smart Buttons

Smart Buttons are assigned and created just like other macros. Just click on a button in your IDI Configurator, and select 'Macro.' Then, select the macro from the list! Be aware that only macros in your active macro library file will be visible.

### Creating Macros & Smart Buttons

Press on a button and select 'Macro Builder.' Then select a button type, like the ones shown to the right: Press/Release, Toggle, Timed Press (aka Tap/Press/Hold), Sequence (aka Count), or another type. Then program a function for each condition that you'd like. For example, for a Press/Release button, make sure you assign different tasks to the 'Press,' 'Release,' and if you'd like, 'While Down.'



#### Need to send commands faster?

The **Press/Release Smart Button™** will kick your command input speed into overdrive, sending the same command at double speed or 2 related commands on the same button press, one on the press and the other on the release.

- Easily send the perfect double jump with space bound to the press and again to the release of a button
- Lie prone and defuse a bomb with one press, and plant a claymore mine and pop up with the release



#### Want to click a button or key instead of having to hold it down?

**Toggle Smart Button™** allows you to turn on or off any command with subsequent presses. It's strategic advantage is to allow the tap of a button to have the effect of holding a button down. (The next tap releases the button) It frees up fingers and can be used with any game command. It's also the most efficient button to use to switch between 2 different weapons, items, or commands.



#### Want to switch between 2-3 items or weapons quickly with a single button?

The favored strategic use of the **Timed Press Smart Button™** is to quickly change between up to 3 items or commands, signaled by the duration of the press of a single button.

- Tap quickly to shoot, hold longer to reload, or keep it down to draw your pistol in your favorite FPS
- Easily select between 3 spells with a tap, brief, and long hold in Dragon Age



#### Want to send different commands on a tap, press and hold?

The **Sequence Smart Button™** sends a series of commands that you specify to complete a game task, all from the same button, for the ultimate in control ease. If for some reason you don't need to complete the full series of commands you can specify a time out period and the button will reset.



# Fragpedal Quad Setup Guide

## Using Device Memory Saves

11

### What are Device Memory Saves?

Memory Saves contain up to 30 profiles at once, and your Fragpedal can only use one at a time. However, you can always save your device memory save to your computer, as a back up, or load a device memory save from your computer.

### Saving and loading device memory

This can be reached through the device menu.

- Device memory files are always saved in your /IDI Device directory, so look for them there.
- When loading a memory file, the file must be located in your /IDI Device directory.

### Downloading device memory files

We post device memory files on our website, loaded with different games, for your use. If you don't see a memory file for a specific game, request it!

- Before loading the file, make sure it is saved to your /IDI Device directory

### Clearing device memory

If you want to delete all your profiles at once, select 'Clear Memory' from the Device menu





# Fragpedal Quad Setup Guide

## Downloading new content

12

### What new content?

IDI Devices like the Fragpedal open a lot of new possibilities for programming your controller. That's why we strive to provide you with the best profiles made by our users, and suggested configurations for the top games. Check out the Files page on [www.GoodWorkMatters.com](http://www.GoodWorkMatters.com) to see our DLC.

### Downloading memory saves

If you've downloaded a whole memory save, simply load the file onto your device. Make sure you have the required support files that go along with the memory save.

### Downloading macros and alias files

Most downloadable content on Good Work Matters comes in a .exe file. Run the file to your /IDI Device directory. This installs all the necessary support files. Now, when you create profiles, you'll be able to choose from your new background images, macro files, and alias files.

GOOD WORK  
Systems

Products

Learn More

Support

Blog



Make yourself at home

Step onto the cutting edge with IDI (Input Device Intelligence) Devices.



IDI Smart Buttons



R2 Omnimouse - Gaming Mouse



Game Support and Macros